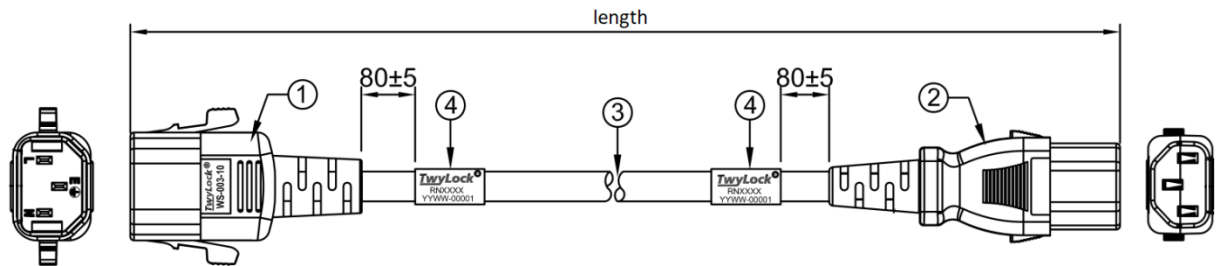


## Product specification



### ① IEC 60320 C14 TwyLock® male connector

Locks in most snap-in sockets of major PDU manufacturers.  
Pull force 30lbs (14kg) during 1 minute

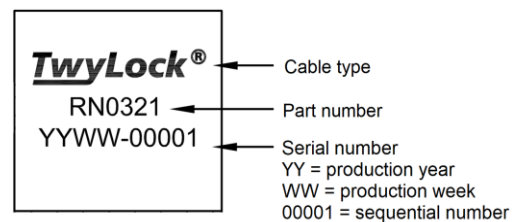
### ② IEC 60320 C13 TwyLock® female connector

Locks in all common appliances with C14 socket

### ③ Cable

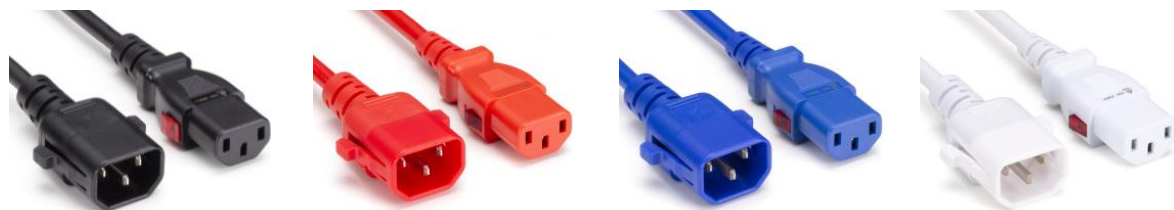
Type: H05VV-F3G-1.0mm<sup>2</sup> SJTW-17AWG-3C-105°C

### ④ S/N Label



## General Specifications

- Rating 10A/250V
- Temperature range -5 to +105°C
- Delivered in bundles of 10pcs, rolled



## Product range

**RN03xy** (x specifies the length and y the color)

y = color	black	red Pantone 032C	blue Pantone 661C	white RAL 9016
x = length				
0.5m (1.6ft)	RN0311	RN0312	RN0313	RN0314
1.0m (3.3ft)	RN0321	RN0322	RN0323	RN0324
1.5m (5ft)	RN0331	RN0332	RN0333	RN0334
2.0m (6.6ft)	RN0341	RN0342	RN0343	RN0344
2.5m (8.2ft)	RN0351	RN0352	RN0353	RN0354
3.0m (10ft)	RN0361	RN0362	RN0363	RN0364

## Approvals and Compliance



- UL/CUL according to file E115330
- TUV certificates no. R50373087 and R50236799
- RoHS
- REACH
- WEEE

**Disclaimer:** Copyright © 2023 Riedo Networks Ltd. All rights reserved. RNX and TwyLock are registered trademarks of Riedo Networks Ltd. Every effort has been made to ensure that the information in this product datasheet is accurate. Anyway, the information in this product datasheet is subject to change without notice and should not be construed as a commitment by Riedo Networks Ltd. Riedo Networks Ltd assumes no responsibility or liability for any errors or inaccuracies that may appear in this product datasheet.